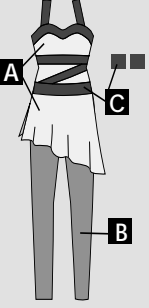






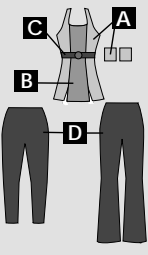
**PG 2 T901 INCANTATION**



| fabric type         | color name | color # |
|---------------------|------------|---------|
| <b>A</b> lycra      |            |         |
| <b>B</b> lycra      |            |         |
| <b>C</b> foll lycra |            |         |

Armbands sold separately.  
Please check box if desired.  
 AB20 FOIL LYCRA ARMBANDS

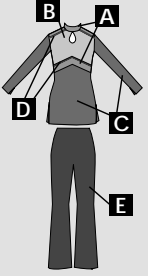
**PG 3 T1094 BLISS TUNIC**



| fabric type               | color name | color # |
|---------------------------|------------|---------|
| <b>A</b> sequin dot lycra |            |         |
| <b>B</b> foll lycra       |            |         |
| <b>C</b> lycra            |            |         |

Pants sold separately.  
 T589 CAPRI LEGGINGS  
 T868 PANTS  
**D** lycra

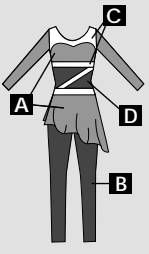
**PG 6 T1102 HEAR THIS TUNIC**



| fabric type            | color name | color # |
|------------------------|------------|---------|
| <b>A</b> foll lycra    |            |         |
| <b>B</b> sequin velvet |            |         |
| <b>C</b> velvet        |            |         |
| <b>D</b> lycra binding |            |         |

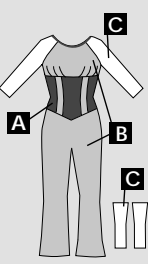
Pants sold separately.  
 T868 PANTS  
**E** lycra

**PG 3 T1090 INCANTATION LONG SLEEVE**



| fabric type         | color name | color # |
|---------------------|------------|---------|
| <b>A</b> lycra      |            |         |
| <b>B</b> lycra      |            |         |
| <b>C</b> foll lycra |            |         |
| <b>D</b> lycra      |            |         |

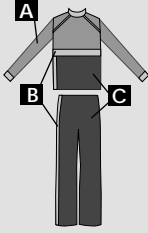
**PG 4 T1096 CONQUEST**



| fabric type            | color name | color # |
|------------------------|------------|---------|
| <b>A</b> foll lycra    |            |         |
| <b>B</b> lycra         |            |         |
| <b>C</b> big hole mesh |            |         |

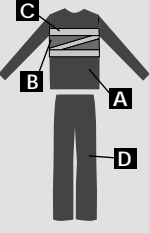
Socks sold separately.  
Please check box if desired.  
 T1096S CONQUEST SOCKS

**PG 6 T1103 POWER PLAY GUY**



| fabric type         | color name | color # |
|---------------------|------------|---------|
| <b>A</b> lycra      |            |         |
| <b>B</b> foll lycra |            |         |
| <b>C</b> velvet     |            |         |

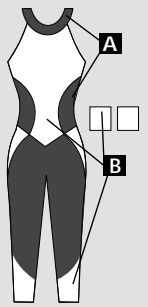
**PG 3 T1091 INCANTATION GUY**



| fabric type         | color name | color # |
|---------------------|------------|---------|
| <b>A</b> lycra      |            |         |
| <b>B</b> lycra      |            |         |
| <b>C</b> foll lycra |            |         |

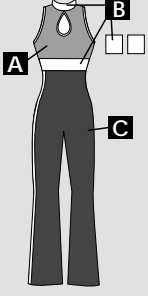
Pants sold separately.  
 849 GUY'S PANTS  
**D** lycra

**PG 4 T1097 BREAKAWAY**



| fabric type              | color name | color # |
|--------------------------|------------|---------|
| <b>A</b> velvet          |            |         |
| <b>B</b> twillite velvet |            |         |

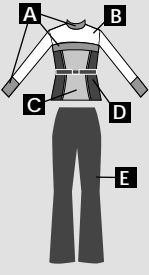
**PG 6 T1104 POWER PLAY SLEEVELESS UNITARD**



| fabric type         | color name | color # |
|---------------------|------------|---------|
| <b>A</b> lycra      |            |         |
| <b>B</b> foll lycra |            |         |
| <b>C</b> velvet     |            |         |

Armbands sold separately.  
Please check box if desired.  
 AB20 FOIL LYCRA ARMBANDS

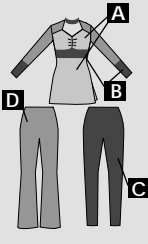
**PG 3 T1092 OPUS LONG SLEEVE**



| fabric type         | color name | color # |
|---------------------|------------|---------|
| <b>A</b> foll lycra |            |         |
| <b>B</b> mesh       |            |         |
| <b>C</b> lycra      |            |         |
| <b>D</b> lycra      |            |         |

Belt is always black.  
Pants sold separately.  
 T868 PANTS  
**E** lycra

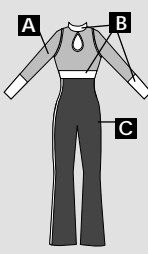
**PG 4 T1098 MILES AWAY TUNIC**



| fabric type         | color name | color # |
|---------------------|------------|---------|
| <b>A</b> lycra      |            |         |
| <b>B</b> foll lycra |            |         |

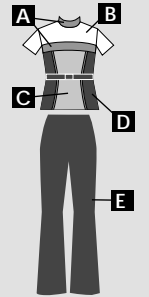
Fishnet is always black.  
Pants sold separately.  
 T1099 LEGGINGS  
**C** foll lycra  
 T868 PANTS  
**D** lycra

**PG 6 T1105 POWER PLAY LONG SLEEVE UNITARD**



| fabric type         | color name | color # |
|---------------------|------------|---------|
| <b>A</b> lycra      |            |         |
| <b>B</b> foll lycra |            |         |
| <b>C</b> velvet     |            |         |

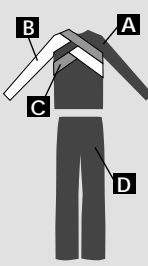
**PG 3 T1093 OPUS SHORT SLEEVE**



| fabric type         | color name | color # |
|---------------------|------------|---------|
| <b>A</b> foll lycra |            |         |
| <b>B</b> mesh       |            |         |
| <b>C</b> lycra      |            |         |
| <b>D</b> lycra      |            |         |

Belt is always black.  
Pants sold separately.  
 T868 PANTS  
**E** lycra

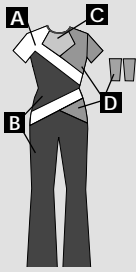
**PG 6 T934 FREQUENCY GUY**



| fabric type         | color name | color # |
|---------------------|------------|---------|
| <b>A</b> velvet     |            |         |
| <b>B</b> lycra      |            |         |
| <b>C</b> foll lycra |            |         |

Pants sold separately.  
 848 GUY'S PANTS  
**D** velvet

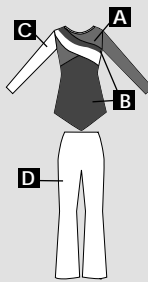
PG 7 T1107 HOLD OUT SHORT SLEEVE UNITARD



| fabric type                         | color name | color # |
|-------------------------------------|------------|---------|
| <b>A</b> all over sequin dot velvet |            |         |
| <b>B</b> velvet                     |            |         |
| <b>C</b> mesh                       |            |         |
| <b>D</b> glitter velvet             |            |         |

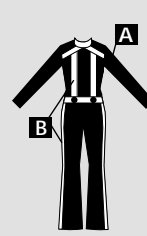
Mitts sold separately.  
Please check box if desired.  
 T1107M GLITTER VELVET WRIST MITTS

PG 8 T1112 FINE LINE TUNIC



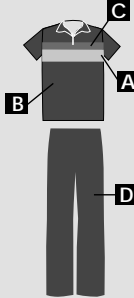
| fabric type   | color name | color # |
|---|------------|---------|
| <b>A</b> glitter velvet                                       |            |         |
| <b>B</b> velvet   |            |         |
| <b>C</b> lycra  |            |         |
| Pants sold separately.<br><input type="checkbox"/> T868 PANTS |            |         |
| <b>D</b> lycra  |            |         |

PG 10 T909 MESMERIZE



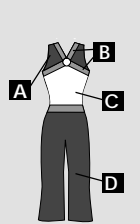
| fabric type    | color name | color # |
|----------------|------------|---------|
| <b>A</b> lycra |            |         |
| <b>B</b> lycra |            |         |

PG 7 T1108 HOLD OUT GUY



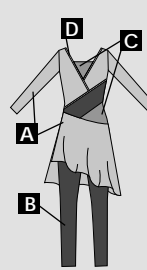
| fabric type   | color name | color # |
|---|------------|---------|
| <b>A</b> all over sequin dot velvet   |            |         |
| <b>B</b> velvet   |            |         |
| <b>C</b> glitter velvet   |            |         |
| Zipper is always black.<br>Pants sold separately.<br><input type="checkbox"/> 849 GUY'S PANTS |            |         |
| <b>D</b> lycra  |            |         |

PG 9 T1113 DANGEROUS SLEEVELESS



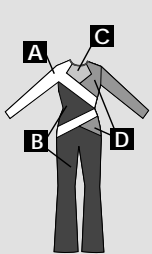
| fabric type                         | color name | color # |
|-------------------------------------|------------|---------|
| <b>A</b> velvet                     |            |         |
| <b>B</b> hologram sequin dot velvet |            |         |
| <b>C</b> velvet                     |            |         |
| <b>D</b> velvet                     |            |         |

PG 10 T1116 REVOLUTION



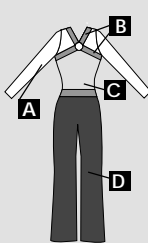
| fabric type                 | color name | color # |
|-----------------------------|------------|---------|
| <b>A</b> lycra              |            |         |
| <b>B</b> lycra              |            |         |
| <b>C</b> lycra              |            |         |
| <b>D</b> foil lycra binding |            |         |

PG 7 T1109 HOLD OUT LONG SLEEVE UNITARD



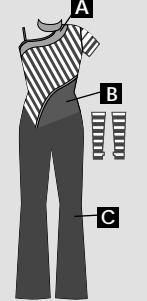
| fabric type                         | color name | color # |
|-------------------------------------|------------|---------|
| <b>A</b> all over sequin dot velvet |            |         |
| <b>B</b> velvet                     |            |         |
| <b>C</b> mesh                       |            |         |
| <b>D</b> glitter velvet             |            |         |

PG 9 T1114 DANGEROUS LONG SLEEVE



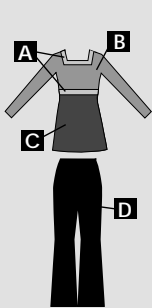
| fabric type                         | color name | color # |
|-------------------------------------|------------|---------|
| <b>A</b> velvet                     |            |         |
| <b>B</b> hologram sequin dot velvet |            |         |
| <b>C</b> velvet                     |            |         |
| <b>D</b> velvet                     |            |         |

PG 11 T1117 ENCORE UNITARD



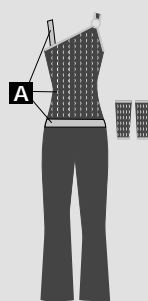
| fabric type  | color name | color # |
|--|------------|---------|
| <b>A</b> foil lycra  |            |         |
| <b>B</b> lycra   |            |         |
| <b>C</b> lycra   |            |         |
| Binding will match <b>A</b> and <b>B</b> .<br>Gauntlets sold separately.<br>Please check box if desired.<br><input type="checkbox"/> T1117M ENCORE GAUNTLETS |            |         |

PG 8 T1110 JUSTIFY



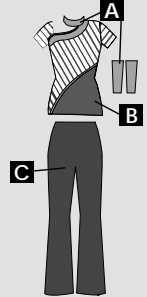
| fabric type  | color name | color # |
|--|------------|---------|
| <b>A</b> foil lycra  |            |         |
| <b>B</b> all over sequin dot velvet  |            |         |
| <b>C</b> velvet  |            |         |
| Pants sold separately.<br><input type="checkbox"/> T863-51 BLACK VELVET PANTS<br><input type="checkbox"/> 817 VELVET PANTS |            |         |
| <b>D</b> velvet  |            |         |

PG 10 T1115 DISTURBIA



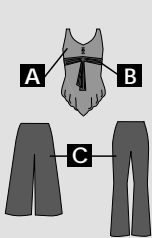
| fabric type   | color name | color # |
|---|------------|---------|
| <b>A</b> lycra  |            |         |
| Mitts sold separately.<br>Please check box if desired.<br><input type="checkbox"/> T1115M DISTURBIA MITTS |            |         |

PG 11 T1118 ENCORE TOP



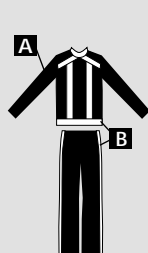
| fabric type  | color name | color # |
|--|------------|---------|
| <b>A</b> foil lycra  |            |         |
| <b>B</b> lycra   |            |         |
| Binding will match <b>A</b> and <b>B</b> .<br>Pants and mitts sold separately.<br>Please check box if desired.<br><input type="checkbox"/> T809M FOIL WRIST MITTS<br><input type="checkbox"/> T868 PANTS |            |         |
| <b>C</b> lycra   |            |         |

PG 8 T717 PRESSURE



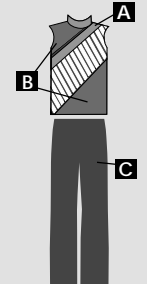
| fabric type   | color name | color # |
|---|------------|---------|
| <b>A</b> glitter slinky   |            |         |
| <b>B</b> slinky   |            |         |
| Pants sold separately.<br><input type="checkbox"/> T718 CROP PANTS<br><input type="checkbox"/> T852 PANTS |            |         |
| <b>C</b> slinky   |            |         |

PG 10 T908 MESMERIZE GUY



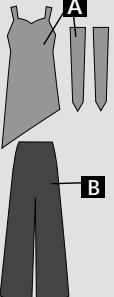
| fabric type    | color name | color # |
|----------------|------------|---------|
| <b>A</b> lycra |            |         |
| <b>B</b> lycra |            |         |

PG 11 T1119 ENCORE GUY



| fabric type   | color name | color # |
|---|------------|---------|
| <b>A</b> foil lycra   |            |         |
| <b>B</b> lycra  |            |         |
| Binding will match <b>A</b> foil lycra.<br>Pants sold separately.<br>Please check box if desired.<br><input type="checkbox"/> 849 GUY'S PANTS |            |         |
| <b>C</b> lycra  |            |         |

**PG 12** **T472 INFINITY**



| fabric type             | color name | color # |
|-------------------------|------------|---------|
| <b>A</b> glitter slinky |            |         |

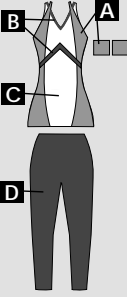
Pants and mitts sold separately. Please check box if desired.

T473 WIDE LEG PANTS

|                 |  |  |
|-----------------|--|--|
| <b>B</b> slinky |  |  |
|-----------------|--|--|

T458M GLITTER SLINKY MITTS

**PG 14** **T1130 IT'S LIKE THAT TUNIC**



| fabric type             | color name | color # |
|-------------------------|------------|---------|
| <b>A</b> tattered ombre |            |         |
| <b>B</b> lycra          |            |         |
| <b>C</b> lycra          |            |         |

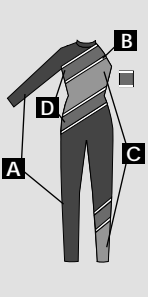
Pants and armbands sold separately. Please check box if desired.

AB19 IT'S LIKE THAT ARMBANDS

T589 CAPRI LEGGINGS

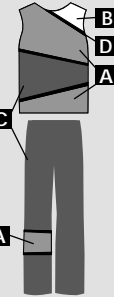
|                |  |  |
|----------------|--|--|
| <b>D</b> lycra |  |  |
|----------------|--|--|

**PG 23** **T1148 STELLAR**



| fabric type                 | color name | color # |
|-----------------------------|------------|---------|
| <b>A</b> velvet             |            |         |
| <b>B</b> foil lycra binding |            |         |
| <b>C</b> panne velvet       |            |         |
| <b>D</b> glitter velvet     |            |         |

**PG 13** **T1123 BLACK WATER GUY TOP**



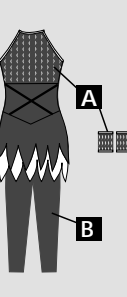
| fabric type                 | color name | color # |
|-----------------------------|------------|---------|
| <b>A</b> tattered ombre     |            |         |
| <b>B</b> mesh               |            |         |
| <b>C</b> lycra              |            |         |
| <b>D</b> foil lycra binding |            |         |

Pants sold separately.

T1124 BLACK WATER GUY PANTS

|                             |  |  |
|-----------------------------|--|--|
| <b>A</b> tattered ombre     |  |  |
| <b>C</b> lycra              |  |  |
| <b>D</b> foil lycra binding |  |  |

**PG 15** **T1131 ADDICTED**

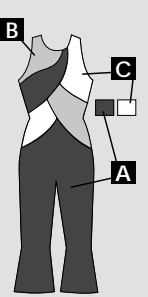


| fabric type    | color name | color # |
|----------------|------------|---------|
| <b>A</b> lycra |            |         |
| <b>B</b> lycra |            |         |

Armbands sold separately. Please check box if desired.

T1131 ADDICTED ARMBANDS

**PG 24** **T774 BREATHE**

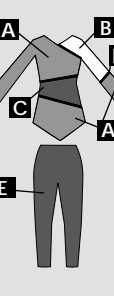


| fabric type     | color name | color # |
|-----------------|------------|---------|
| <b>A</b> velvet |            |         |
| <b>B</b> velvet |            |         |
| <b>C</b> velvet |            |         |

Armbands sold separately. Please check box if desired.

AB17 CONTRASTING VELVET ARMBANDS

**PG 13** **T1125 BLACK WATER**




| fabric type                 | color name | color # |
|-----------------------------|------------|---------|
| <b>A</b> tattered ombre     |            |         |
| <b>B</b> mesh               |            |         |
| <b>C</b> lycra              |            |         |
| <b>D</b> foil lycra binding |            |         |

Pants sold separately.

T589 CAPRI LEGGINGS

|                |  |  |
|----------------|--|--|
| <b>E</b> lycra |  |  |
|----------------|--|--|

**PG 19** **T1139 ESCAPE**

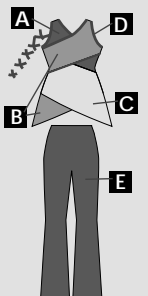


| fabric type             | color name | color # |
|-------------------------|------------|---------|
| <b>A</b> glitter velvet |            |         |
| <b>B</b> foil lycra     |            |         |
| <b>C</b> lycra          |            |         |
| <b>D</b> velvet         |            |         |

Lace overlay must be black. Mitts sold separately. Please check box if desired.

T1139M GLITTER VELVET MITTS

**PG 26** **T986 HYPER BALLAD TUNIC**




| fabric type                 | color name | color # |
|-----------------------------|------------|---------|
| <b>A</b> lycra              |            |         |
| <b>B</b> lycra              |            |         |
| <b>C</b> lycra              |            |         |
| <b>D</b> foil lycra binding |            |         |

Pants sold separately. Please check box if desired.

T868 MATTE LYCRA PANTS

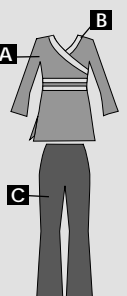
|                |  |  |
|----------------|--|--|
| <b>E</b> lycra |  |  |
|----------------|--|--|

**PG 14** **T648N HIGH VOLTAGE**



| fabric type    | color name | color # |
|----------------|------------|---------|
| <b>A</b> lycra |            |         |

**PG 19** **T1140 ONCE AGAIN TUNIC**



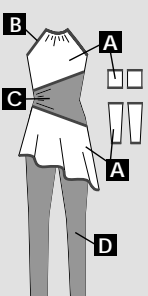
| fabric type           | color name | color # |
|-----------------------|------------|---------|
| <b>A</b> panne velvet |            |         |
| <b>B</b> foil lycra   |            |         |

Pants sold separately.

T868 PANTS

|                |  |  |
|----------------|--|--|
| <b>C</b> lycra |  |  |
|----------------|--|--|

**PG 26** **T961 RAYMONDA**



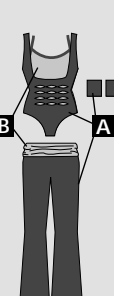
| fabric type         | color name | color # |
|---------------------|------------|---------|
| <b>A</b> lycra      |            |         |
| <b>B</b> foil lycra |            |         |
| <b>C</b> lycra      |            |         |
| <b>D</b> lycra      |            |         |

Mitts and armbands sold separately. Please check box if desired.

AB22 TRIMMED ARMBANDS

T961M TRIMMED MITTS

**PG 14** **T1129 DO SOMETHING**



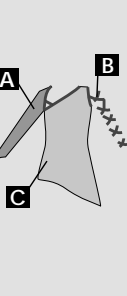
| fabric type         | color name | color # |
|---------------------|------------|---------|
| <b>A</b> lycra      |            |         |
| <b>B</b> foil lycra |            |         |

Binding will match **A** lycra

Armbands sold separately. Please check box if desired.

AB18 MATTE LYCRA ARMBANDS

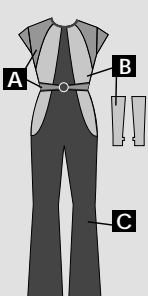
**PG 22** **T1147 UNFAITHFUL**



| fabric type                 | color name | color # |
|-----------------------------|------------|---------|
| <b>A</b> mesh               |            |         |
| <b>B</b> foil lycra binding |            |         |
| <b>C</b> panne velvet       |            |         |

Pants sold separately. See page 12 of order form.

**PG 28** **T1159 RUNAWAY**



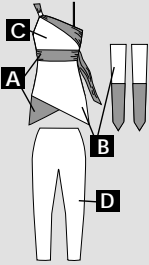
| fabric type    | color name | color # |
|----------------|------------|---------|
| <b>A</b> lycra |            |         |
| <b>B</b> lycra |            |         |
| <b>C</b> lycra |            |         |

Binding will match **C** lycra

Gauntlets sold separately. Please check box if desired.

T1159M RUNAWAY GAUNTLETS

PG 28 T1160 AFTER ALL TUNIC




| fabric type    | color name | color # |
|----------------|------------|---------|
| <b>A</b> lycra |            |         |
| <b>B</b> mesh  |            |         |
| <b>C</b> lycra |            |         |

Pants and mitts sold separately.  
Please check box if desired.  
 T1160M AFTER ALL MITTS  
 T589 CAPRI LEGGINGS

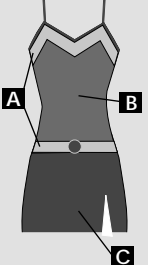
|                |  |  |
|----------------|--|--|
| <b>D</b> lycra |  |  |
|----------------|--|--|

PG 35 T659 FIVE GUYS NAMED MOE GUY



| fabric type    | color name | color # |
|----------------|------------|---------|
| <b>A</b> lycra |            |         |

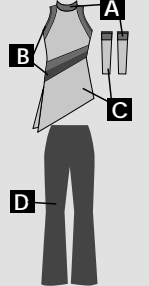
PG 42 T1187 KNOCK ON WOOD DRESS



| fabric type             | color name | color # |
|-------------------------|------------|---------|
| <b>A</b> foil lycra     |            |         |
| <b>B</b> sequin spandex |            |         |
| <b>C</b> lycra          |            |         |

Binding will match **C** lycra.

PG 28 T1161 GRAVITY TUNIC

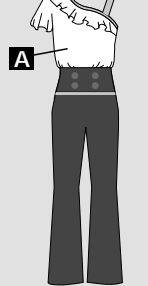


| fabric type               | color name | color # |
|---------------------------|------------|---------|
| <b>A</b> foil lycra       |            |         |
| <b>B</b> velvet & binding |            |         |
| <b>C</b> velvet           |            |         |

Pants and mitts sold separately.  
Please check box if desired.  
 T1161M GRAVITY MITTS  
 T868 PANTS

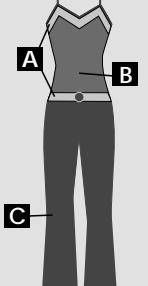
|                |  |  |
|----------------|--|--|
| <b>D</b> lycra |  |  |
|----------------|--|--|

PG 36 T1174 TONIGHT



| fabric type               | color name | color # |
|---------------------------|------------|---------|
| <b>A</b> sequin dot lycra |            |         |

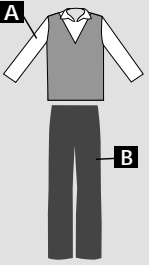
PG 42 T1188 KNOCK ON WOOD UNITARD



| fabric type             | color name | color # |
|-------------------------|------------|---------|
| <b>A</b> foil lycra     |            |         |
| <b>B</b> sequin spandex |            |         |
| <b>C</b> lycra          |            |         |

Binding will match **C** lycra.

PG 35 T1172 WATCH ME GUY

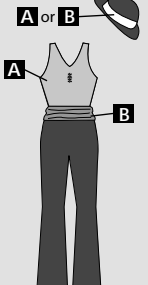


| fabric type    | color name | color # |
|----------------|------------|---------|
| <b>A</b> lycra |            |         |

Pants sold separately.  
 848 GUY'S PANTS

|                 |  |  |
|-----------------|--|--|
| <b>B</b> velvet |  |  |
|-----------------|--|--|

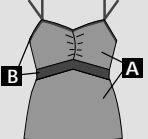
PG 36 T998 SMOOTH CRIMINAL



| fabric type               | color name | color # |
|---------------------------|------------|---------|
| <b>A</b> sequin dot lycra |            |         |
| <b>B</b> sequin dot lycra |            |         |

Flower only available in red.  
Hat sold separately.  
Please check box if desired.  
 T998H SMOOTH CRIMINAL HAT  
Band on hat to match  
 **A** OR  **B**

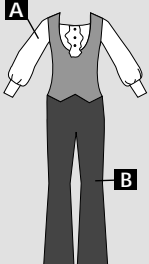
PG 43 T1025 STAND UP TOP



| fabric type             | color name | color # |
|-------------------------|------------|---------|
| <b>A</b> sequin spandex |            |         |
| <b>B</b> foil lycra     |            |         |

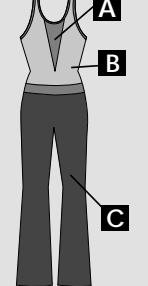
Pants sold separately.  
See page 11 of order form.

PG 35 T1173 WATCH ME



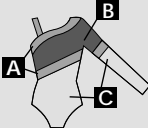
| fabric type     | color name | color # |
|-----------------|------------|---------|
| <b>A</b> lycra  |            |         |
| <b>B</b> velvet |            |         |

PG 42 T1021 WORK IT UNITARD



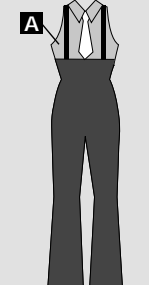
| fabric type             | color name | color # |
|-------------------------|------------|---------|
| <b>A</b> foil lycra     |            |         |
| <b>B</b> sequin spandex |            |         |
| <b>C</b> lycra          |            |         |

PG 44 T1189 TOO COOL LEOTARD



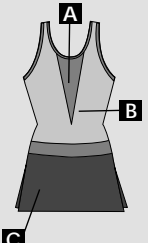
| fabric type             | color name | color # |
|-------------------------|------------|---------|
| <b>A</b> foil lycra     |            |         |
| <b>B</b> sequin spandex |            |         |
| <b>C</b> lycra          |            |         |

PG 35 T490 FIVE GUYS NAMED MOE



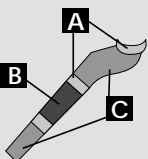
| fabric type    | color name | color # |
|----------------|------------|---------|
| <b>A</b> lycra |            |         |

PG 42 T1022 WORK IT DRESS



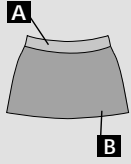
| fabric type             | color name | color # |
|-------------------------|------------|---------|
| <b>A</b> foil lycra     |            |         |
| <b>B</b> sequin spandex |            |         |
| <b>C</b> lycra          |            |         |

PG 44 T1189A TOO COOL SHRUG



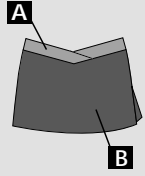
| fabric type             | color name | color # |
|-------------------------|------------|---------|
| <b>A</b> foil lycra     |            |         |
| <b>B</b> sequin spandex |            |         |
| <b>C</b> lycra          |            |         |

PG 44 T1190 TOO COOL SKIRT



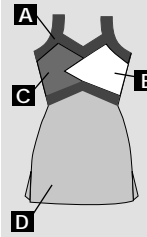
| fabric type         | color name | color # |
|---------------------|------------|---------|
| <b>A</b> foll lycra |            |         |
| <b>B</b> lycra      |            |         |

PG 45 T1195 TURBO CHARGED SKIRT



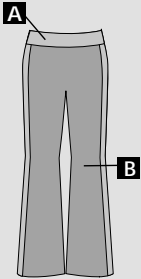
| fabric type                         | color name | color # |
|-------------------------------------|------------|---------|
| <b>A</b> foll lycra                 |            |         |
| <b>B</b> hologram sequin dot velvet |            |         |

PG 47 T1201 BOTTLE POP



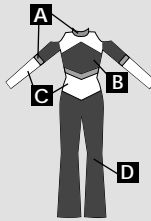
| fabric type                         | color name | color # |
|-------------------------------------|------------|---------|
| <b>A</b> foll lycra                 |            |         |
| <b>B</b> all over sequin dot velvet |            |         |
| <b>C</b> all over sequin dot velvet |            |         |
| <b>D</b> velvet                     |            |         |

PG 44 T1191 TOO COOL PANTS



| fabric type         | color name | color # |
|---------------------|------------|---------|
| <b>A</b> foll lycra |            |         |
| <b>B</b> lycra      |            |         |

PG 45 T1196 CONTROL



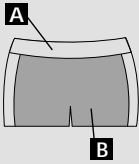
| fabric type            | color name | color # |
|------------------------|------------|---------|
| <b>A</b> foll lycra    |            |         |
| <b>B</b> sequin velvet |            |         |
| <b>C</b> lycra         |            |         |
| <b>D</b> velvet        |            |         |

PG 47 T502 MOCK T-NECK LEOTARD



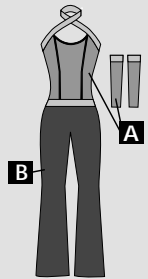
| fabric type    | color name | color # |
|----------------|------------|---------|
| <b>A</b> lycra |            |         |

PG 44 T1192 TOO COOL HOT PANTS



| fabric type         | color name | color # |
|---------------------|------------|---------|
| <b>A</b> foll lycra |            |         |
| <b>B</b> lycra      |            |         |

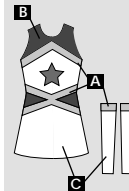
PG 46 T1198 LIKE THAT UNITARD



| fabric type               | color name | color # |
|---------------------------|------------|---------|
| <b>A</b> sequin dot lycra |            |         |
| <b>B</b> lycra            |            |         |

Rhinestone trim is always black.  
Binding will match **B** lycra.  
Mitts sold separately. Please check box if desired.  
 T1198M LIKE THAT MITTS

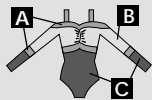
PG 48 T1202 CLAP YA HANDS



| fabric type         | color name | color # |
|---------------------|------------|---------|
| <b>A</b> foll lycra |            |         |
| <b>B</b> foll lycra |            |         |
| <b>C</b> lycra      |            |         |

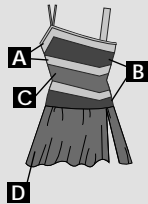
Star applique available in  
 GOLD  
 SILVER  
Mitts sold separately. Please check box if desired.  
 T1203M TAKE A RIDE MITTS

PG 45 T1193 TURBO CHARGED LEOTARD



| fabric type                         | color name | color # |
|-------------------------------------|------------|---------|
| <b>A</b> foll lycra                 |            |         |
| <b>B</b> hologram sequin dot velvet |            |         |
| <b>C</b> lycra                      |            |         |

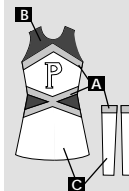
PG 46 T1199 FABULOUS



| fabric type                         | color name | color # |
|-------------------------------------|------------|---------|
| <b>A</b> foll lycra                 |            |         |
| <b>B</b> all over sequin dot velvet |            |         |
| <b>C</b> mesh                       |            |         |
| <b>D</b> lycra                      |            |         |

Binding will match **A** foll lycra

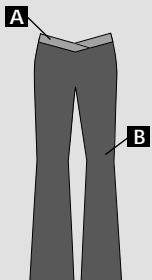
PG 48 T1203 TAKE A RIDE



| fabric type         | color name | color # |
|---------------------|------------|---------|
| <b>A</b> foll lycra |            |         |
| <b>B</b> foll lycra |            |         |
| <b>C</b> lycra      |            |         |

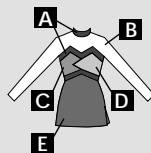
Applique available in  
 GOLD  
 SILVER  
LETTER CHOICE \_\_\_\_\_  
Mitts sold separately. Please check box if desired.  
 T1203M TAKE A RIDE MITTS

PG 45 T1194 TURBO CHARGED PANTS



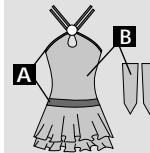
| fabric type         | color name | color # |
|---------------------|------------|---------|
| <b>A</b> foll lycra |            |         |
| <b>B</b> velvet     |            |         |

PG 47 T1200 BOTTLE POP LONG SLEEVE



| fabric type                         | color name | color # |
|-------------------------------------|------------|---------|
| <b>A</b> foll lycra                 |            |         |
| <b>B</b> velvet                     |            |         |
| <b>C</b> all over sequin dot velvet |            |         |
| <b>D</b> all over sequin dot velvet |            |         |
| <b>E</b> velvet                     |            |         |

PG 48 T1204 DAYS GO BY



| fabric type            | color name | color # |
|------------------------|------------|---------|
| <b>A</b> foll lycra    |            |         |
| <b>B</b> sequin velvet |            |         |

Mitts sold separately. Please check box if desired.  
 T1204M DAYS GO BY MITTS

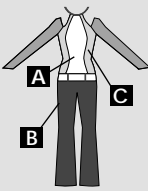
**PG 49** **T1205 GONE SHORTALL**



| fabric type         | color name | color # |
|---------------------|------------|---------|
| <b>A</b> foll lycra |            |         |
| <b>B</b> lycra      |            |         |

Sequin dot bodice only available in black

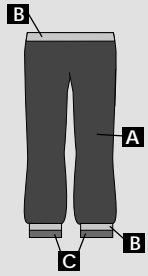
**PG 50** **T1211 LET'S BOUNCE UNITARD**



| fabric type                         | color name | color # |
|-------------------------------------|------------|---------|
| <b>A</b> foll lycra                 |            |         |
| <b>B</b> velvet                     |            |         |
| <b>C</b> hologram sequin dot velvet |            |         |

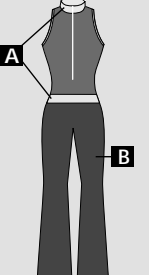
Sequin dot mesh sleeves are always black

**PG 52** **T1217 IT'S OVER PANTS**



| fabric type         | color name | color # |
|---------------------|------------|---------|
| <b>A</b> lycra      |            |         |
| <b>B</b> foll lycra |            |         |
| <b>C</b> foll lycra |            |         |

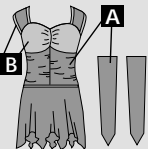
**PG 49** **T1206 GONE UNITARD**



| fabric type         | color name | color # |
|---------------------|------------|---------|
| <b>A</b> foll lycra |            |         |
| <b>B</b> lycra      |            |         |

Sequin dot bodice only available in black

**PG 51** **T1213 ABSOLUTELY NOT**




| fabric type         | color name | color # |
|---------------------|------------|---------|
| <b>A</b> mesh       |            |         |
| <b>B</b> foll lycra |            |         |

Binding matches **B** foll lycra

Mitts sold separately.  
Please check box if desired.  
 T1213M ABSOLUTELY NOT MITTS

**PG 52** **T1218 CROSS THE LINE JACKET**



| fabric type                 | color name | color # |
|-----------------------------|------------|---------|
| <b>A</b> foll lycra         |            |         |
| <b>B</b> foll lycra binding |            |         |
| <b>C</b> lycra              |            |         |

Zipper is always black

**PG 50** **T1208 GIVE ME TONIGHT SHORTALL**

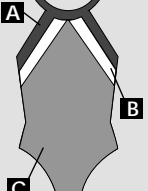


| fabric type         | color name | color # |
|---------------------|------------|---------|
| <b>A</b> foll lycra |            |         |
| <b>B</b> lycra      |            |         |

Diamond mesh only available in black.

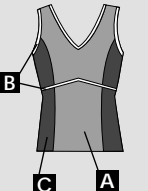
Mitts sold separately.  
Please check box if desired.  
 T616M DIAMOND MESH MITTS

**PG 52** **T1214 IT'S OVER LEOTARD**



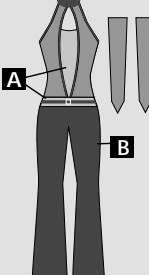
| fabric type               | color name | color # |
|---------------------------|------------|---------|
| <b>A</b> foll lycra       |            |         |
| <b>B</b> foll lycra       |            |         |
| <b>C</b> sequin dot lycra |            |         |

**PG 52** **T1219 CROSS THE LINE TANK**



| fabric type                 | color name | color # |
|-----------------------------|------------|---------|
| <b>A</b> foll lycra         |            |         |
| <b>B</b> foll lycra binding |            |         |
| <b>C</b> lycra              |            |         |

**PG 50** **T1209 GIVE ME TONIGHT UNITARD**

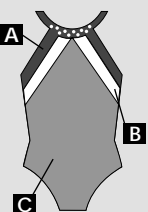


| fabric type         | color name | color # |
|---------------------|------------|---------|
| <b>A</b> foll lycra |            |         |
| <b>B</b> lycra      |            |         |

Diamond mesh only available in black.

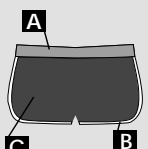
Mitts sold separately.  
Please check box if desired.  
 T616M DIAMOND MESH MITTS

**PG 52** **T1215 IT'S OVER LEOTARD W/RHINESTONES**



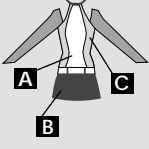
| fabric type               | color name | color # |
|---------------------------|------------|---------|
| <b>A</b> foll lycra       |            |         |
| <b>B</b> foll lycra       |            |         |
| <b>C</b> sequin dot lycra |            |         |

**PG 52** **T1220 CROSS THE LINE SHORTS**



| fabric type                 | color name | color # |
|-----------------------------|------------|---------|
| <b>A</b> foll lycra         |            |         |
| <b>B</b> foll lycra binding |            |         |
| <b>C</b> lycra              |            |         |

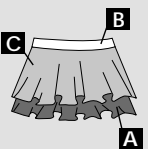
**PG 50** **T1210 LET'S BOUNCE DRESS**



| fabric type                         | color name | color # |
|-------------------------------------|------------|---------|
| <b>A</b> foll lycra                 |            |         |
| <b>B</b> velvet                     |            |         |
| <b>C</b> hologram sequin dot velvet |            |         |

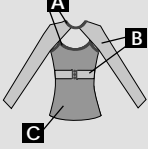
Sequin dot mesh sleeves are always black

**PG 52** **T1216 IT'S OVER SKIRT**



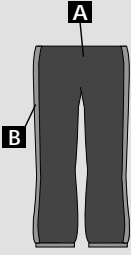
| fabric type               | color name | color # |
|---------------------------|------------|---------|
| <b>A</b> lycra            |            |         |
| <b>B</b> foll lycra       |            |         |
| <b>C</b> sequin dot lycra |            |         |

**PG 53** **T1221 RELAPSE TOP & SHRUG**



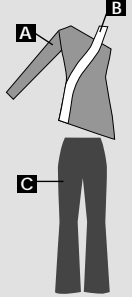
| fabric type                 | color name | color # |
|-----------------------------|------------|---------|
| <b>A</b> foll lycra binding |            |         |
| <b>B</b> mesh               |            |         |
| <b>C</b> sequin dot lycra   |            |         |

PG 53 T1222 RELAPSE CROP PANTS



| fabric type         | color name | color # |
|---------------------|------------|---------|
| <b>A</b> lycra      |            |         |
| <b>B</b> foll lycra |            |         |

PG 56 T597 REGAL TUNIC

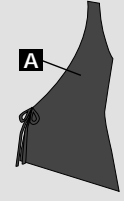


| fabric type     | color name | color # |
|-----------------|------------|---------|
| <b>A</b> velvet |            |         |
| <b>B</b> velvet |            |         |

Pants sold separately.  
 T863 BLACK VELVET PANTS  
 817 PANTS

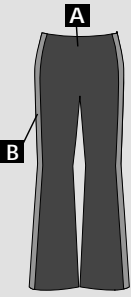
|                 |  |  |
|-----------------|--|--|
| <b>C</b> velvet |  |  |
|-----------------|--|--|

PG 56 T1238 WISHWEAR SIDE WRAP



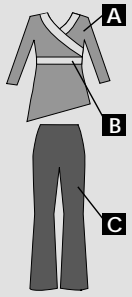
| fabric type    | color name | color # |
|----------------|------------|---------|
| <b>A</b> lycra |            |         |

PG 53 T1223 RELAPSE PANTS



| fabric type         | color name | color # |
|---------------------|------------|---------|
| <b>A</b> lycra      |            |         |
| <b>B</b> foll lycra |            |         |

PG 56 T902 BREAKABLE TUNIC

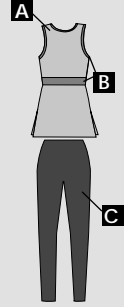


| fabric type         | color name | color # |
|---------------------|------------|---------|
| <b>A</b> velvet     |            |         |
| <b>B</b> foll lycra |            |         |

Pants sold separately.  
 T868 PANTS

|                |  |  |
|----------------|--|--|
| <b>C</b> lycra |  |  |
|----------------|--|--|

PG 57 T1239 HELENA TUNIC

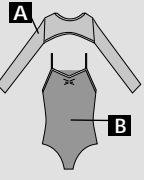


| fabric type         | color name | color # |
|---------------------|------------|---------|
| <b>A</b> lycra      |            |         |
| <b>B</b> foll lycra |            |         |

Pants sold separately.  
 846 LEGGINGS

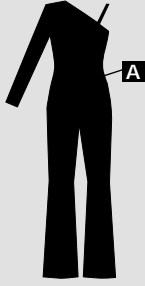
|                |  |  |
|----------------|--|--|
| <b>C</b> lycra |  |  |
|----------------|--|--|

PG 54 T1225 IN THE AYER LEOTARD & SHRUG




| fabric type            | color name | color # |
|------------------------|------------|---------|
| <b>A</b> big hole mesh |            |         |
| <b>B</b> foll lycra    |            |         |

PG 56 T520 WISHWEAR ASYMMETRICAL UNITARD




| fabric type     | color name | color # |
|-----------------|------------|---------|
| <b>A</b> velvet |            |         |

PG 57 T502 MOCK T-NECK LEOTARD



| fabric type    | color name | color # |
|----------------|------------|---------|
| <b>A</b> lycra |            |         |


PG 54 T1226 IN THE AYER CROP PANTS



| fabric type         | color name | color # |
|---------------------|------------|---------|
| <b>A</b> foll lycra |            |         |

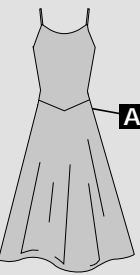
French terry available in  
 WHITE  
 BLACK

PG 56 T853 WISHWEAR LYCRA WRAP BELT



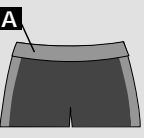
| fabric type    | color name | color # |
|----------------|------------|---------|
| <b>A</b> lycra |            |         |

PG 57 T1240 WISHWEAR DRESS



| fabric type    | color name | color # |
|----------------|------------|---------|
| <b>A</b> lycra |            |         |

PG 54 T1227 IN THE AYER SHORTS



| fabric type         | color name | color # |
|---------------------|------------|---------|
| <b>A</b> foll lycra |            |         |

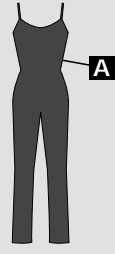
French terry available in  
 WHITE  
 BLACK

PG 56 T1237 WISHWEAR VELOUR UNITARD



| fabric type     | color name | color # |
|-----------------|------------|---------|
| <b>A</b> velvet |            |         |

PG 57 T1241 WISHWEAR CAMI UNITARD



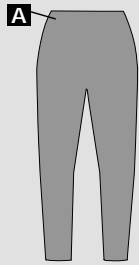
| fabric type    | color name | color # |
|----------------|------------|---------|
| <b>A</b> lycra |            |         |

PG 57 T1242 WISHWEAR LYCRA SHRUG




| fabric type | color name | color # |
|-------------|------------|---------|
| A lycra     |            |         |

BASICS T589 MATTE LYCRA CAPRI LEGGINGS



| fabric type | color name | color # |
|-------------|------------|---------|
| A lycra     |            |         |

BASICS T1185 FOIL LYCRA PANTS



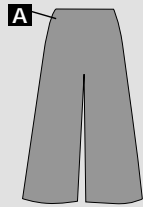
| fabric type  | color name | color # |
|--------------|------------|---------|
| A foil lycra |            |         |

PG 57 T1243 WISHWEAR LYCRA SKIRT



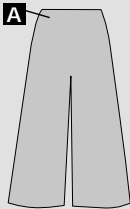
| fabric type | color name | color # |
|-------------|------------|---------|
| A lycra     |            |         |

BASICS T704 LYCRA CROP PANTS




| fabric type | color name | color # |
|-------------|------------|---------|
| A lycra     |            |         |

BASICS T718 SLINKY CROP PANTS



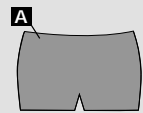
| fabric type | color name | color # |
|-------------|------------|---------|
| A slinky    |            |         |

BASICS 817 VELVET PANTS



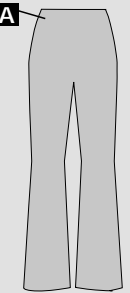
| fabric type | color name | color # |
|-------------|------------|---------|
| A velvet    |            |         |

BASICS T865 MATTE LYCRA HOT PANTS



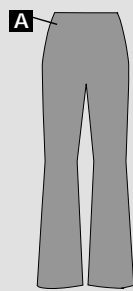
| fabric type | color name | color # |
|-------------|------------|---------|
| A lycra     |            |         |

BASICS T852 SLINKY PANTS




| fabric type | color name | color # |
|-------------|------------|---------|
| A slinky    |            |         |

BASICS T868 MATTE LYCRA PANTS




| fabric type | color name | color # |
|-------------|------------|---------|
| A lycra     |            |         |

BASICS T1026 FOIL LYCRA HOT PANTS



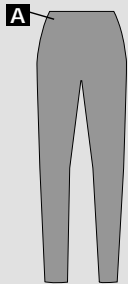
| fabric type  | color name | color # |
|--------------|------------|---------|
| A foil lycra |            |         |

BASICS 849 GUY'S PANTS




| fabric type | color name | color # |
|-------------|------------|---------|
| A lycra     |            |         |

BASICS 846 MATTE LYCRA LEGGINGS



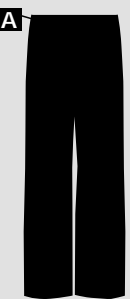
| fabric type | color name | color # |
|-------------|------------|---------|
| A lycra     |            |         |

BASICS T1099 FOIL LYCRA LEGGINGS



| fabric type  | color name | color # |
|--------------|------------|---------|
| A foil lycra |            |         |

BASICS 848 GUY'S VELVET PANTS



| fabric type | color name | color # |
|-------------|------------|---------|
| A velvet    |            |         |